

# Super Prime

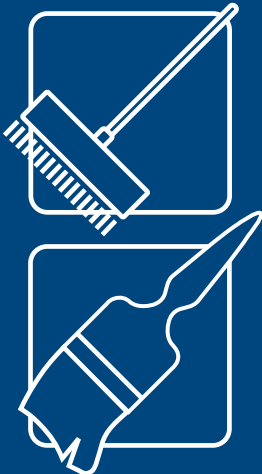
## Packaging



## Mixing



## Application



## Uses



## Substrates

Concrete

## A water-based primer for non-porous surfaces

### Description

A water-based, acrylic primer with solvent like penetration properties for use on smooth/helicoptered/steel trowelled concrete floors. Improves adhesion and reduces air bubbles rising through levelling compounds.

### Uses

A primer for smooth/helicoptered/steel trowelled concrete floors that improves the adhesion of subsequent toppings. Use internally on floor and walls, and externally on walls only.

### Features

- Exceptional adhesion to smooth concrete
- Reduces air bubbles rising through levelling compounds
- Eliminates the need to etch or scabble concrete
- Has solvent like penetrating properties

### Coverage (Approximate)

8-10m<sup>2</sup>/litre

### Performance Data

Tensile adhesion pull-off strength in excess of 1.5 MPa.

### Specification

The primer will be a water-based acrylic with a minimum tensile adhesion strength exceeding 1.5 MPa, such as **Super Prime** manufactured by **Construction Chemicals** and shall be applied in accordance with the manufacturer's instructions.

### Surface Preparation

The substrate must be sound and clean, free from dust, dirt, waxes, paint, and curing compounds and release agents.

### Application

Shake the container well before use.

Apply the **Super Prime** to sound, clean substrates. It is advisable to do a test area to determine the suitability of the product.

Apply with a stiff brush or broom, forcing the primer well into the surface. Apply the topping when the primer is dry or tack free, i.e. after 2-3 hours. Very absorbent concrete may require 2 coats.

**Do not** dilute, **do not** leave bare spots, **do not** use on continuously damp surfaces, i.e. swimming pools, shower bases.

**Do not** use on surfaces subject to negative hydrostatic pressure.

### Shelf Life

2 years