

PRODUCT GUIDE



ACOUSTIC SYSTEMS

WATERPROOFING MEMBRANES

TILE ADHESIVES

GROUTS

PRIMERS & ADDITIVES

DAMPPROOFING & WATERPROOFING

PATCHING & LEVELLING

FLOORING PREPARATION



CLEAR SEALERS

COATINGS

SEALANTS

MAINTENANCE



Dribond **CONSTRUCTION
CHEMICALS**

constructionchemicals.com.au

DRIBOND CONSTRUCTION CHEMICALS

**Australian made and owned,
Dribond Construction Chemicals has
been in business since 1974 and has
grown into one of the most respected
tile adhesive, waterproofing and
repair product manufacturers in
Australia, New Zealand and Asia/
Pacific, with 7 locations including
Adelaide, Brisbane, Melbourne, Perth,
Sydney, Auckland and Kuala Lumpur.**



Research and Development

Dribond Construction Chemicals has a long and successful history of research and development into improving their product performance and keeping abreast of an ever changing building climate.

Demands on product integrity have never been greater, but with a dedicated team of highly qualified technicians, and heavy investment in their new high-tech, state-of-the-art laboratory in Adelaide, Dribond Construction Chemicals are placing themselves at the forefront of a very competitive market.

Products manufactured to the highest standard, to meet the toughest conditions is the benchmark of Dribond Construction Chemicals. A leader in acoustic development, this new facility and testing equipment enables Dribond Construction Chemicals to bring the very best of products to the market, where results speak for themselves.

High-tech, state-of-the-art laboratory and Head Office in South Australia.



MANUFACTURER'S GUARANTEE

ACOUSTIC SYSTEMS
WATERPROOFING MEMBRANES
TILE ADHESIVES

10 Year Manufacturer's Guarantee

Dribond Construction Chemicals manufacture products in Australia, Asia and New Zealand with over 50 years of manufacturing experience.

Dribond Construction Chemicals guarantees its products for 10 years when applied strictly in accordance with its written application instructions, relevant standards or codes, good trade practice to properly prepared and structurally sound substrates.

The application of its products is beyond the manufacturer's control and it is the sole responsibility of the purchaser to determine the suitability of the product for their particular purpose.

The guarantee is for 10 years from the time of application and covers only the cost of material and labour of the original installation when the product is proved and acknowledged to be faulty.



ACOUSTIC SYSTEMS



ACOUSTIBOND

Water-resistant, soundproofing ceramic, porcelain and stone tile adhesive.

Coverage

2 x 12.5kg powder plus 20L liquid / 8-10m² using 15mm notched trowel, over a true surface to give a minimum 3mm dry adhesive bed thickness.



ACOUSTIFLOR

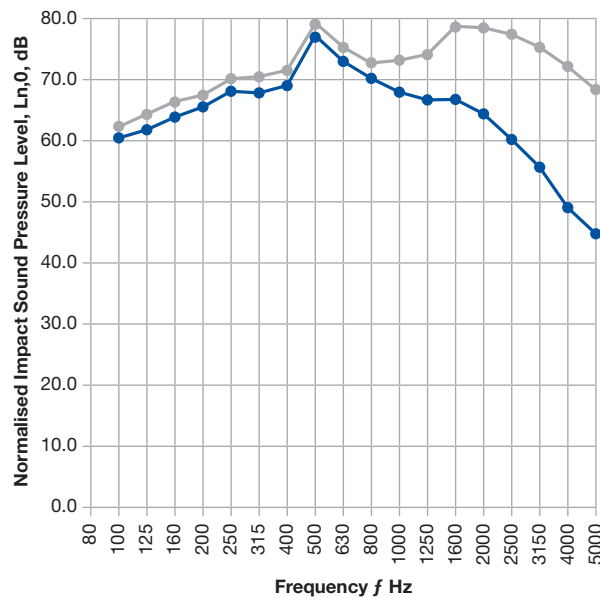
Soundproofing and anti-fracture/crack bridging membrane.

Coverage

20 litres of liquid mixed with 20kg of powder covers 7m² at 6mm thick using a 6mm Dribond pegged trowel.

Laboratory measurement of the reduction of transmitted impact sound of porcelain tiles on **Acoustibond** adhesive.

- 10mm porcelain tile
- 3-5mm layer of **Acoustibond**
- 140mm concrete slab



- Bare 140mm concrete slab
- 3-5mm layer of Acoustibond**
- 10mm porcelain tiles**

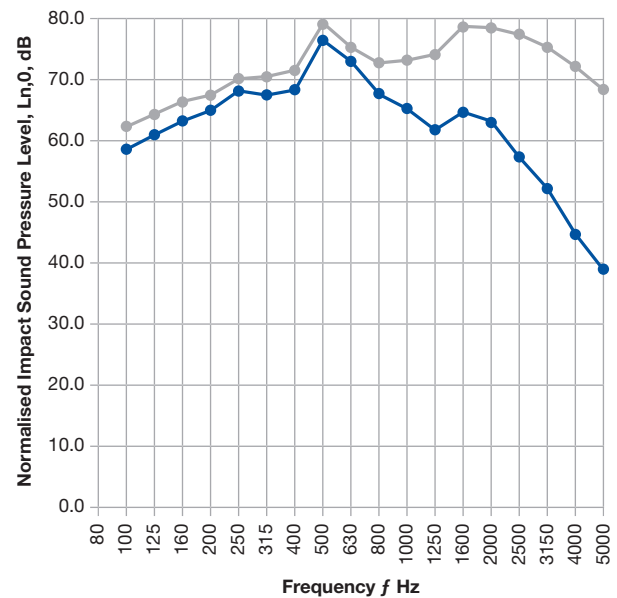
Ln,w 72dB

Ln,w 61dB

Acoustic Improvement ΔL_w 11dB

Laboratory measurement of the reduction of transmitted impact sound of porcelain tiles on **Acoustiflor** and **Acoustibond** adhesives.

- 10mm porcelain tile
- 5mm layer of **Acoustibond**
- 4.5mm layer of **Acoustiflor**
- 140mm concrete slab



- Bare 140mm concrete slab
- 4.5mm layer of Acoustiflor**
- 5mm layer of Acoustibond**
- 10mm porcelain tiles**

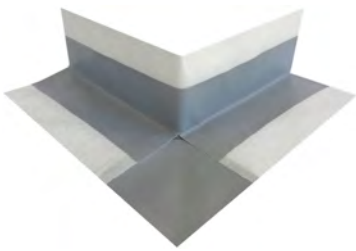
Ln,w 69dB

Ln,w 56dB

Acoustic Improvement ΔL_w 13dB

Disclaimer This Acoustic Test is provided "as is" without any expressed or implied representations or guarantees. Dribond Construction Chemicals Pty Ltd does not make any claims regarding the accuracy or completeness of the information and materials presented. The data included here is based on industry-standard testing methods and aims to describe the performance characteristics of Dribond's acoustic underlayments and adhesives. However, it does not certify suitability for any specific project. While we strive to provide accurate and up-to-date information, Dribond Construction Chemicals Pty Ltd does not warrant that the details in this Acoustic Test are complete, accurate, or non-misleading. This document is intended solely for informational purposes. You should consult with Dribond Construction Chemicals Pty Ltd, or a qualified Acoustical Consultant before taking any action based on this information.

WATERPROOFING MEMBRANES

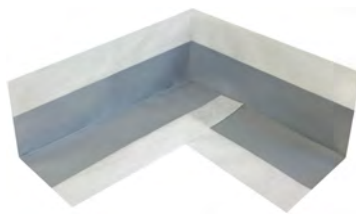


DRIBAND EXTERNAL CORNERS

For sealing external corner intersections.

Coverage

10 x prefabricated 270° corners.



DRIBAND INTERNAL CORNERS

For sealing internal corner intersections.

Coverage

10 x prefabricated 90° corners.

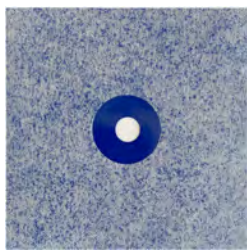


DRIBAND JOINT SEALING TAPE

Waterproof and seal joints, junctions and general areas on floors and walls.

Coverage

120mm x 50m roll



DRIBAND WALL COLLARS

For sealing around penetrations, such as pipes and drainage outlets.

Coverage

10 x wall collars
Size 138mm x 138mm



FLEXIBLE SEALER

One-pack waterproofing membrane applied prior to tiling bathrooms & balconies or left exposed on roofs & balconies.

Coverage

Two coats give a final coverage of 2L/m² (dry film thickness 1.5mm).



HYDRATHANE

Water-based, polyurethane waterproofing membrane.

Coverage

Floors:

A 15 litre pail covers 10m².

Walls:

A 15 litre pail covers 15m².



LIQUID FLASH 1

Reinforced, brush-applied waterproofing membrane.

Coverage

Two coats give a final coverage of 2L/m² (dry film thickness of 1.5mm).



LIQUID FLASH 2

Two-pack, fast-drying, microfibre reinforced, waterproofing and anti-fracture/crack bridging membrane.

Coverage

20L/20kg pack covers 14-18m² (2 coats), dry film thickness 1.5mm.



LIQUID FLASH UNDERTILE

Fast cure, water-based, polyurethane-acrylic, waterproofing membrane.

Coverage

A 15 litre pail covers approximately 10m² (2 coats).

SELECTION GUIDE

WATER-BASED POLYURETHANE		ONE-PACK ACRYLIC		TWO-PACK ACRYLIC	
HYDRATHANE	LIQUID FLASH UNDERTILE	FLEXIBLE SEALER	LIQUID FLASH 1	LIQUID FLASH 2	WATERPROOFING
				● Under screed or tiles	Swimming pools - tanks
●		●	●	●	Basement - retaining walls
●				●	Same day tiling - wet areas, showers, bathrooms
●	●	●	●	●	Wet areas, showers, laundries, bathrooms
		●	●		Gutters
●		●	●	● Under screed or tiles	Roofs - balconies
TECHNICAL INSTRUCTION SHEET					
●	●	●	●	●	Shower waterproofing system
●	●	●	●	●	Wet area waterproofing system
●	●			●	Fast cure wet area waterproofing
●	● Under screed or tiles	●	●	● Under screed or tiles	Waterproofing balconies, rooftops and planter boxes
●		●	●	●	Waterproofing basement walls

User must always refer to constructionchemicals.com.au for the latest technical data sheet for the product concerned.

TILE ADHESIVES



ACOUSTIBOND

Water-resistant, soundproofing ceramic, porcelain and stone tile adhesive.

Coverage 2 x 12.5kg powder / 20L liquid will cover 8-10m² using a 15mm notched trowel.



BONDFIX

Polymer-modified, cement-based, ceramic, porcelain and stone tile adhesive.

Coverage 7-8m² per 20kg bag using a 10mm notched trowel.



CEMFLEX

One-pack, polymer-modified, rubber-based tile adhesive.

Coverage 20kg will cover 7-8m² using a 10mm notched trowel, over a true surface.



DRYMASTIC

White, cement-based, non-slip & non-slump tile adhesive.

Coverage 6mm notch trowel 10m²/20kg
10mm notch trowel 7m²/20kg



DURAFLEX

One-pack, polymer, rubber, tile adhesive.

Coverage 20kg will cover 10m² with a 10mm notched trowel.



ECOFIX

Economical, rubber-modified, stone and tile adhesive.

Coverage 8m² per 20kg using a 10mm notched trowel.



ELASTACRETE

Flexible, acrylic additive for **Kemgrip Floor & Wall**.

Coverage 5-6 litres per 20kg **Kemgrip Floor & Wall**, covers 3-6m² depending on the trowel size.



FASTFLEX

One-part, fast-setting, flexible tile adhesive.

Coverage 6-7m² depending on the surface and notch trowel size.



GRIPFLEX

Premium, flexible, white, mastic adhesive.

Coverage 20kg will cover 13-16m² using a 6mm notched trowel, over a true surface.

TILE ADHESIVES



HYDRABOND

Premium, white, multipurpose, for permanently immersed applications.

Coverage

6mm notch - 12-15m² / 20kg
10mm notch - 8-10m² / 20kg



HYDRALITE

Premium, white or grey, lightweight, multipurpose, for permanently immersed applications.

Coverage

6mm notch - 10-12m² / 13.5kg
10mm notch - 6-8m² / 13.5kg



KEMGRIP FLOOR & WALL

Waterproof ceramic tile adhesive with extra bond.

Coverage

3-6m² per 20kg, depending on tile size and trowel.



KEMGRIP STANDARD

Waterproof ceramic tile adhesive.

Coverage

3-6m² per 20kg, depending on tile size and trowel notch size.



KEMGRIP SUPER

Waterproof ceramic tile adhesive with extra grip.

Coverage

3-6m² per 20kg, depending on tile size and trowel notch size.



MIGHTYMASTIC

White, non-sanded, non-slip/slump tile adhesive

Coverage

6mm notch trowel 10m²/20kg
10mm notch trowel 7m²/20kg



MONOFLEX

High-strength, highly flexible, premium, non-slump/ipping, economical and multipurpose.

Coverage

20kg covers 10m²+ using a 10mm notched trowel (floors)



MONOLITE

Premium, water-resistant, flexible, rubber-modified, lightweight, fast-setting, cementitious adhesive.

Coverage

13.5kg will cover 8-9m² (10mm notched trowel)



MOSAICBOND

Flexible, glass mosaic adhesive/grout.

Coverage

1L with 2.4kg Kemgrout Flexible, 1L with 3.6kg Kemgrout Sanded will cover approx 1.0-1.2m².

TILE ADHESIVES



RAPIDFIX

Fast-setting, two-pack adhesive.

Coverage

4m² per 20kg/5L pack using 10 x 10mm notched trowel.



TILEMASTIC

Premium, white, premixed, non-slip, flexible wall adhesive.

Coverage

2kg per m²



ULTIMA

Two-pack, white, flexible, premium tile adhesive.

Coverage

5L liquid / 12.5kg powder covers 3.5-4m² / 10mm notched trowel and 6-7m² / 6mm notched trowel.



VITRIGRIP

Water-resistant tile adhesive.

Coverage

3-6m² per 20kg, depending on tile size and trowel notch size.



SELECTION GUIDE

		FIRM		FLEXING														FLEXIBLE		
				Cement based														Paste		
		KEMGRIP	RAPIDFIX	VITRIGRIP	ACOUSTIBOND	CENIFLEX	DRYMASTIC	DURAFLEX	ECOFIX	ELASTACRETE *	FASTFLEX	GRIPFLEX	HYDRABOND / HYDRALITE	MIGHTYMASTIC	MONOFLEX	MONOLITE	TILEMASTIC	MOSACBOND	ULTIMA	SUBSTRATE
FLOORS																				
																				Concrete
																				Cement sheet (compressed)
																				Timber (tongue & groove, structural) must have cement sheet underlay fixed
																				Commercial floors
																				Heated slabs
WALLS																				
																				Masonry - concrete, render, brick, block
																				Building boards, cement, gypsum
OTHER																				
#																				Swimming pools (concrete and render)
																				Old tiles
																				Mosaic tiles (made of glass)
																				Moisture sensitive stone
																				Fast set
																				Acoustic adhesive
																				Driveways and high point loads

● Preferred adhesive specification ○ Suitable adhesive ★ Mixed with Kemgrip F&W # F&W/Super mixed with Kemcrete

User must always refer to constructionchemicals.com.au for the latest technical data sheet for the product concerned.

GROUTS



EPEGROUT

Water washable epoxy grout.

Coverage

Use website calculator:
constructionchemicals.com.au/calculators



EPEGROUT TRADE

A water-based, commercial, sanded epoxy grout for joints 2mm to 10mm.

Coverage

1.2kg/m² for 200mm x 200mm tiles x 6mm joint.



GROUT SHIELD

Water-based grout sealer (does not change the grout's appearance).

Coverage

3-8m² per coat/250ml, depending on grout width and porosity.



KEMGROUT FLEXIBLE

Tile grout, mould and fungi resistant.

Coverage Wall tiles 0.5kg/m²
 Mosaics 1.0kg/m²
 Over 3mm joints 1-2kg/m²



KEMGROUT SANDED

Fine-finish waterproof tile grout, chemical and acid resistant.

Coverage 1-2kg/m²



GROUTS COLOUR SELECTION GUIDE

KEMGROUT FLEXIBLE / EPEGROUT



522 Beige



528 River Sand



527 Tan



548 Terracotta



547 Dark Sand



544 Light Mocca



543 Dark Mocca



500 Volcanic Ash



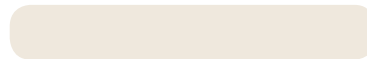
512 Green



506 Light Blue (Not for immersed applications)



536 Burgundy



525 Almond



518 Ivory



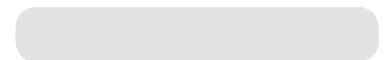
519 Vanilla



501 White



507 Mist Grey



505 Light Grey



549 Mid Grey

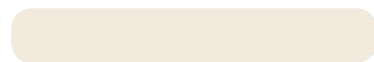


504 Slate Grey



503 Charcoal

KEMGROUT SANDED



Buff



Sand



Light Beige



Tan



Terracotta



Mocca



Light Grey



Mid Grey



Charcoal

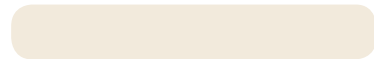


Black ●

EPEGROUT TRADE



White



Buff



Light Grey



Mid Grey



Charcoal



Black

PRIMERS & ADDITIVES



ACRYBOND

Primer for masonry and bonding additive to cement-based mixtures.

Coverage

Primer: 22m²/litre
Bonding Agent: 5m²/litre (5mm)



KEMBOND

Primer for glazed and porcelain tiles.

Coverage

6-10m²/litre



KEMCRETE

Primer/bonding and waterproofing additive.

Coverage

Primer: 15m²/litre
Bonding Slurry: 3-4 m²/litre
Mortar Additive: 1m²/litre
(10mm thick in a 3:1 sand/cement mix)



PRESTO

Liquid set accelerator for screeds and cement mixes. Use in place of mixing water.



PRIMAX

Two-component liquid and powder, water-resistant bonding primer.

Coverage

5L/5kg covers 20m²



PRIMEBOND

Primer and grout additive.

Coverage

Primer: 8m²/litre
Grout additive: 2-3 litres per 20kg of **Kemgrout**.



SUPER PRIME

A water-based primer for non-porous surfaces.

Coverage

8-10m²/litre



DAMPPROOFING & WATERPROOFING



CEMCOTE

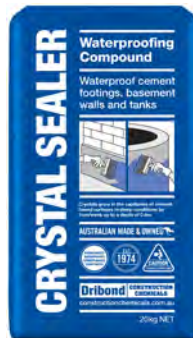
Cement-based waterproof paint.

Coverage

Brush: 0.5mm thick = 0.75kg/m²

1.0mm thick = 1.5kg/m²

Trowel: 2.0mm thick = 3kg/m²



CRYSTAL SEALER

Waterproofing compound.

Coverage

0.8-1.1kg/m²/coat

(2 coats required)



DAMPCURE

Liquid Dampcourse.

Coverage

1.2-1.5 litres/m of 115mm brick

2.3-3 litres/m of 230mm brick



EPECRETE

Multipurpose, water-based, epoxy moisture barrier.

Coverage - 3kg kit

Dampproofing: 9m² (2 coats)

Primer: 18m² (1 coat)



REINFORCED RENDER

Glass fibre, reinforced, high-performance waterproof render.

Coverage

4m² per 20kg bag 3mm thick



PATCHING & LEVELLING



CONCRETE HARDENER

Chemically hardens concrete floors.

Coverage

Allow at least 1 litre per 4m² per coat (two coats are required).



CURE & SEAL

Chlorinated, rubber-curing compound.

Coverage

Steel trowelled surface: 10m²/L
Wood floated: 5-7m²/L



DRISCREED

Premixed, engineered, polymer-modified screed.

Coverage

20kg covers 1m² at 10mm thick.



FEATHER FLOOR

Trowel applied finishing underlay.

Coverage

15-30m²/5kg bag depending on the surface condition.



LEVEL FLOOR STANDARD

Durable, self-levelling underlay for ceramic tiles and timber floors.

Coverage

1.5kg/m² per 1mm thickness



LEVEL FLOOR TUFF

Hard-wearing, self-levelling flooring compound.

Coverage

1.5 kg/m² per 1mm thickness



LEVEL FLOOR V15

Smooth, sandable, self-levelling underlay prior to laying carpet and vinyl.

Coverage

1.5kg/m² per 1mm thickness



NON-SHRINK GROUT

Class A expanding grout.

Coverage

For each cubic metre of grout required allow approximately 100 x 20kg bags.



PATCH & ANCHOR

Fast-setting patching compound.

Coverage

15kg/m² at 6mm thickness

PATCHING & LEVELLING



QUICKCRETE

Fast-setting mortar -
15-20min. set - just add water.

Coverage

200 x 10kg bags = m³



RAPID SET 45

Non-s slump, fast-set, patching
and repair compound.

Coverage

1.5kg/m² per 1mm thickness



REINFORCED SCREED

Impact-resistant flooring
compound.

Coverage

3mm thick - 5kg/m²
5mm thick - 8kg/m²



SKIMFINISH

A thin, decorative cement
floor finish

Coverage

4m² per 20kg bag at
3mm thickness.



CLEAR SEALERS



GREENSEAL

Premium, clear, penetrating sealer for polished porcelain and natural stone.

Coverage

8-35m²/litre, depending on surface porosity.



GROUT SHIELD

Water-based grout sealer (does not change the grout's appearance).

Coverage

3-8m² per coat/250ml, depending on grout width and porosity.



KEMCOTE GLOSS

Clear, gloss, 'wet look' coating for porous surfaces and slate.

Coverage

8-10m²/litre/coat



MICRO SEAL

Clear, penetrating sealer for polished porcelain and natural stone.

Coverage

20-30m²/litre



NATURAL SEALER

Penetrating sealer that doesn't change the appearance.

Coverage

8-10m²/litre/coat



REVIVE & SEAL

A solvent-based, penetrating sealer for porous surfaces that highlights the substrate colour.

Coverage

10-40m²/litre/coat



SEALCOTE

Interior/exterior, water-based sealer that preserves the original appearance.

Coverage

8-10m²/litre/coat



STONE SEALER

Clear, gloss, water-based sealer.

Coverage

10-12m² per litre

PENETRATING SEALERS

Sealers that penetrate into the substrate and do not change the surface appearance.

NATURAL SEALER

Penetrating Sealer

SEALCOTE

Penetrating Sealer

SURFACE SEALERS

Sealers that coat surfaces and give the substrate a wet look.

STONE SEALER

Surface Sealer

REVIVE & SEAL

Penetrating Sealer

UNCOATED

KEMCOTE GLOSS

Surface Sealer

GREENSEAL

Penetrating Sealer

MICRO SEAL

Penetrating Sealer

COATINGS



DECKGRIP

Slip-resistant, flexible, waterproof coating.

Coverage

1m²/litre (2 coats)



DRIVEWAY STAIN

A decorative concrete stain.

Coverage

Wood float: 5-7m²/litre/coat (two coats are required). 3 coats may be required on some substrates.



ELASTAKOTE

Flexible, acrylic waterproofing coating.

Coverage

6m²/litre at 100 microns thick.
2 coats for normal applications.
3 coats for severe applications.



ROLTEX

Textured Finish.

Coverage

2m² per litre



COATINGS COLOUR SELECTION GUIDE

STANDARD COLOUR RANGE



20 White



22 Off White



25 Light Grey



26 Cement Grey



27 Mid Grey



28 Cool Grey



29 Dark Grey



30 Cream



33 Mint Green



35 Light Sandstone



36 Sand



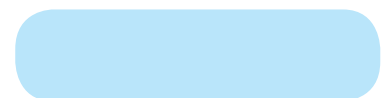
37 Mid Sandstone



38 Burnt Orange



39 Dark Sandstone



45 Light Blue



48 Steel Blue



49 Dark Blue



75 Light Brown



85 Charcoal



89 Black

STANDARD COLOURS

DRIVEWAY STAIN

26 Cement Grey **35** Light Sandstone **37** Mid Sandstone **39** Dark Sandstone
85 Charcoal **89** Black

ROLTEX

20 White **25** Light Grey **30** Cream **45** Light Blue **75** Light Brown

ELASTAKOTE

20 White **25** Light Grey **30** Cream **45** Light Blue **49** Dark Blue **75** Light Brown

DECKGRIP

28 Cool Grey **29** Dark Grey **33** Mint Green **36** Sand **38** Burnt Orange **48** Steel Blue

SEALANTS



SMOOTHING AGENT
Smoothing agent for sealants.

MAINTENANCE



KEMCLEAN
Tile, brick, stone and concrete cleaner.
Coverage
10-15m²/litre undiluted



TILE GRIP
Reduces slip on wet tiled floors.
Coverage
1L covers approximately 10-12m² depending on surface type.



Adelaide

Adelaide

49-57 Davis St
Wingfield SA 5013
Phone (08) 8243 7888



Brisbane

Brisbane

45 Coulson St
Wacol QLD 4076
Phone (07) 3271 2944



Melbourne

Melbourne

11 Gabrielle Ct
Bayswater North VIC 3153
Phone (03) 9761 4711



Perth

Perth

11 Collie St
Welshpool WA 6106
Phone (08) 9356 9999



Sydney

Sydney

31-33 Newton Rd
Wetherill Park NSW 2164
Phone (02) 9756 3533



Auckland

Auckland

16 Carpenter Rd
East Tamaki
Phone (09) 273 5444



Kuala Lumpur

Kuala Lumpur

Lot 2 Jalan Kecapi
33/2 Elite Industrial Estate Off Jalan
Bukit Kemuning 40400 Shah Alam
Phone (603) 5122 2522

